



TRILLION
TREES



The ReForest Fund

Turning pledges into action

We focus on **high quality forest landscape restoration**

embedded in our wider conservation programmes



**Protect standing
forests**



**Advance
restoration**



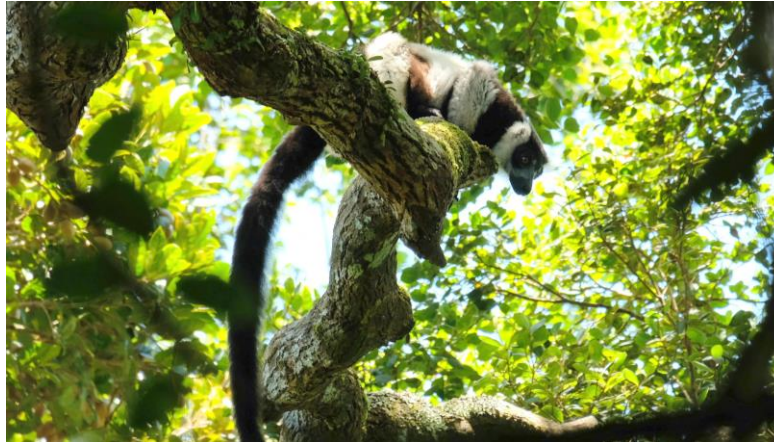
**End the causes
of deforestation**

Restoration with Trillion Trees



Impact for people

Our projects are delivered by working in partnership with **local communities** at the forest frontier, providing **livelihood support, climate resilience, adaptation** and **ensuring just and equitable benefits**



Impact for nature

Our projects enhance the **protection of wildlife** and increase **habitat for endangered species** by enhancing forest connectivity



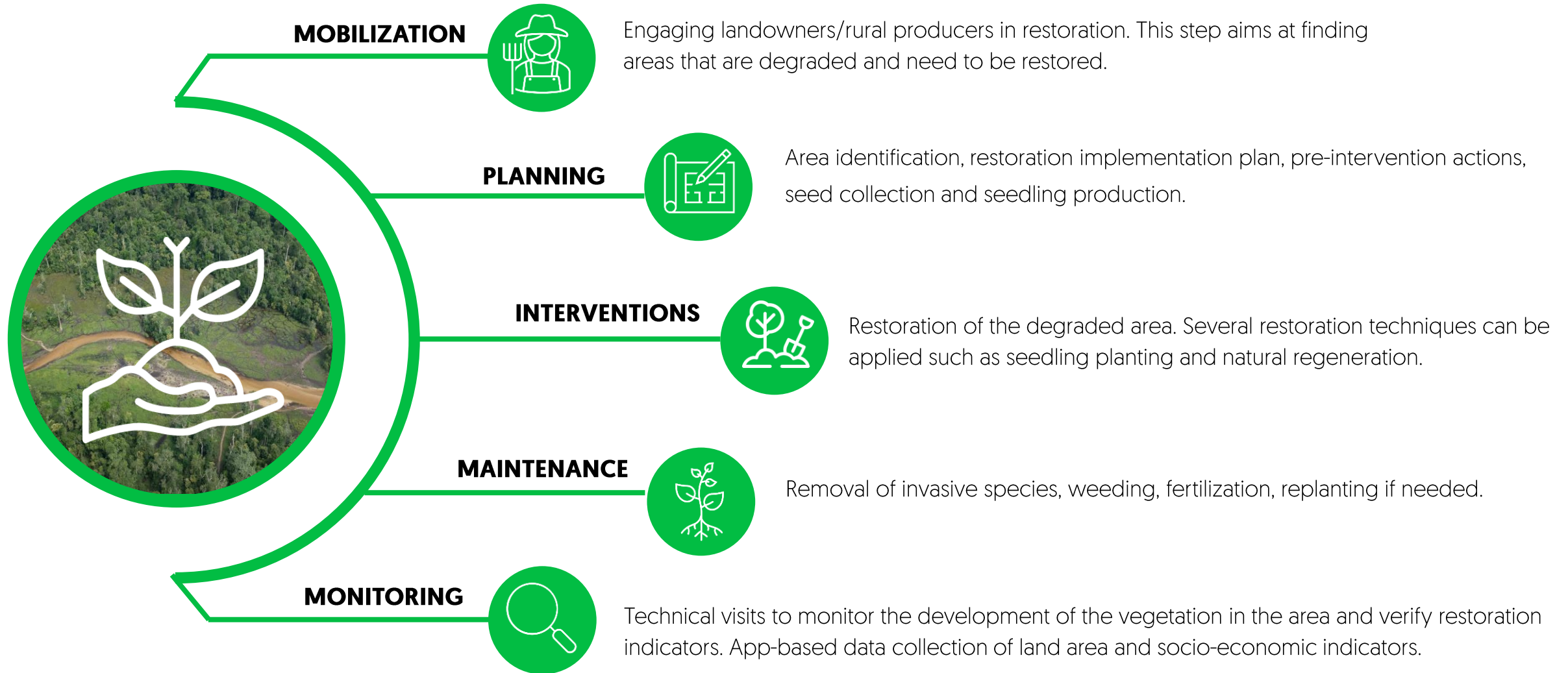
Impact for climate

Our projects aim to restore the ecological integrity of forest landscapes, **removing carbon dioxide** from the atmosphere, while also helping to **protect carbon stocks** in standing forests

ReForest Fund

- **Provides early stage support** for forest restoration in biodiversity hotspots
- A **growing portfolio of community-led projects** in forest frontier areas across the tropics
 - 26 countries and 40 landscapes
- **Prioritises natural forest** restoration with native species to maximise benefits for people, nature and climate

High-quality restoration: How things happen on the ground





Misiones, Argentina



Cordoba, Argentina



Tunari NP, Bolivia



Santa Cruz, Bolivia



Atlantic Forest, Brazil



Maya Forest, Guatemala



Mbeliling, Indonesia



ReForest Fund

Growing trees, restoring forests



Mount Kenya, Kenya



Kaptagat, Kenya



Nam Et Phou Louey, Laos



Makira, Madagascar



Jovel Valley, Mexico



Madidi Tambopata, Peru



Bismarck Mtns, Papua New Guinea



Coastal Forests, Tanzania



Ruvuma, Tanzania

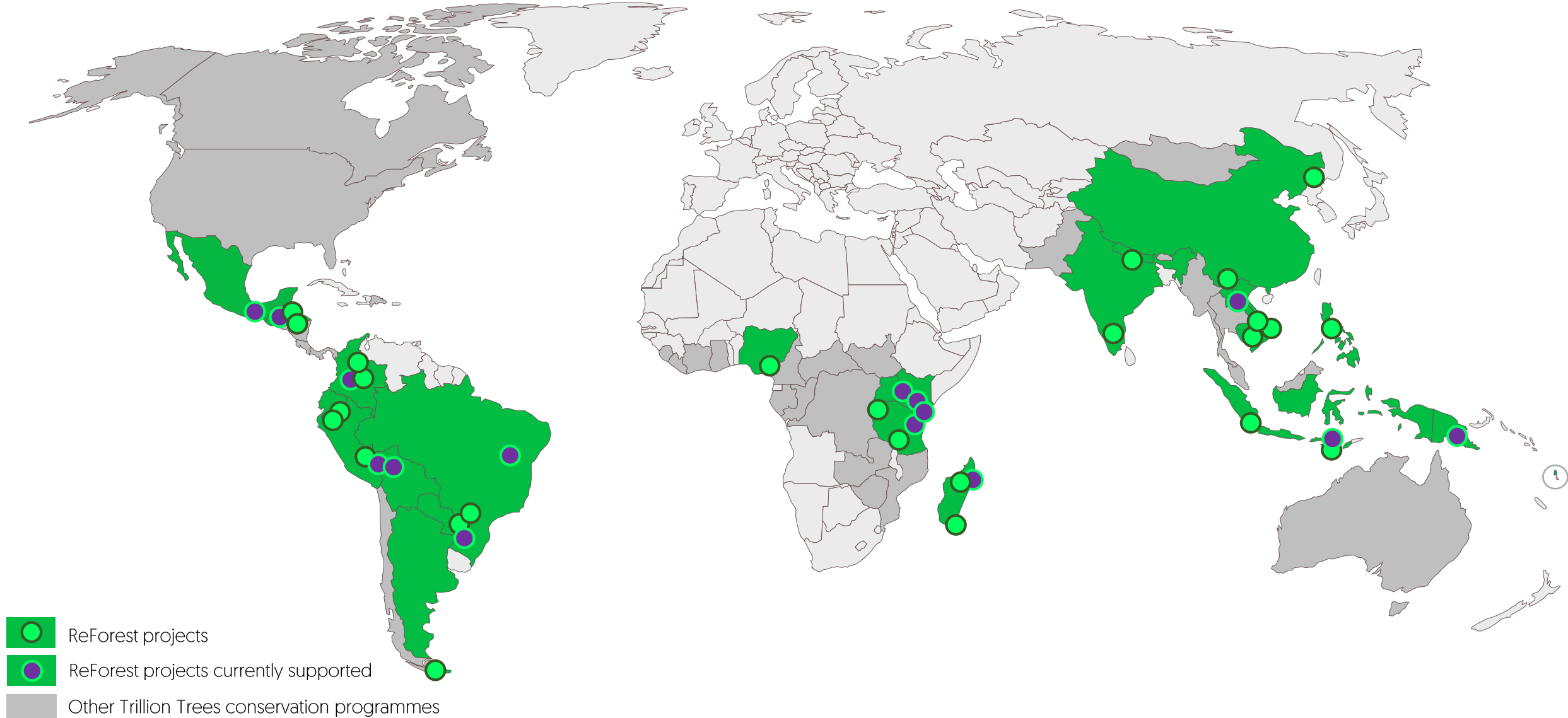


Usambaras, Tanzania



Bwindi, Uganda

ReForest Fund Project locations



Latin America project examples

Maya Biosphere, Guatemala

Potential for over 3,000,000 trees

Restoring reclaimed illegal cattle ranches

Supporting rural community forest management



Western Andes, Colombia

Potential for 2,500,000 trees

Conserving unique biodiversity and ecosystem services

Addressing deforestation drivers with communities



Tambopata, Peru

Potential for 1,600,000 trees

Supporting local community coffee farmers

Re-growing native trees



High Andes: Bolivia, Ecuador & Peru

Potential for 300,000 trees

Supporting a new protected area

Investing in local women's groups



Trillion Trees Restoration projects

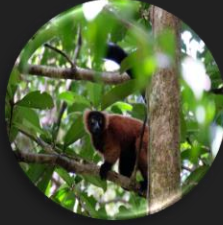
Other Trillion Trees Partner projects

Makira, Madagascar

Potential for 640,000 trees

Reconnecting forest patches

Supporting community agroforestry



Usambara Mountains, Tanzania

Potential for 300,000 trees

Restoring degraded forest and agroforestry

School-run tree nurseries supplying local communities



Mount Kenya, Kenya

Potential for 1,000,000 trees

Conserving unique biodiversity and water resources

Addressing deforestation drivers with communities



Congo-Nile Divide, Rwanda

Potential for 100,000 trees

Restoring natural forest

Training village savings groups on agroforestry



East Africa project examples



Trillion Trees Restoration projects

Other Trillion Trees Partner projects

Nam Et Phou Louey NP, Laos

Potential for 389,500 trees

Restoring degraded forest to restore function

Conserving endangered species



Mount Hilong-Hilong, Philippines

Potential for 500,000 trees

Restoring through assisted natural regeneration

Supporting Indigenous communities



Bismarck Mountains, Papua New Guinea

Potential for 300,000 trees

Enrichment planting of natural forest and agroforestry

Conserving unique tree kangaroo



Rote Island, Indonesia

Potential for 400,000 trees

Restoration of freshwater lake catchment

Conserving habitat of endangered snake-necked turtle



Asia-Pacific project examples

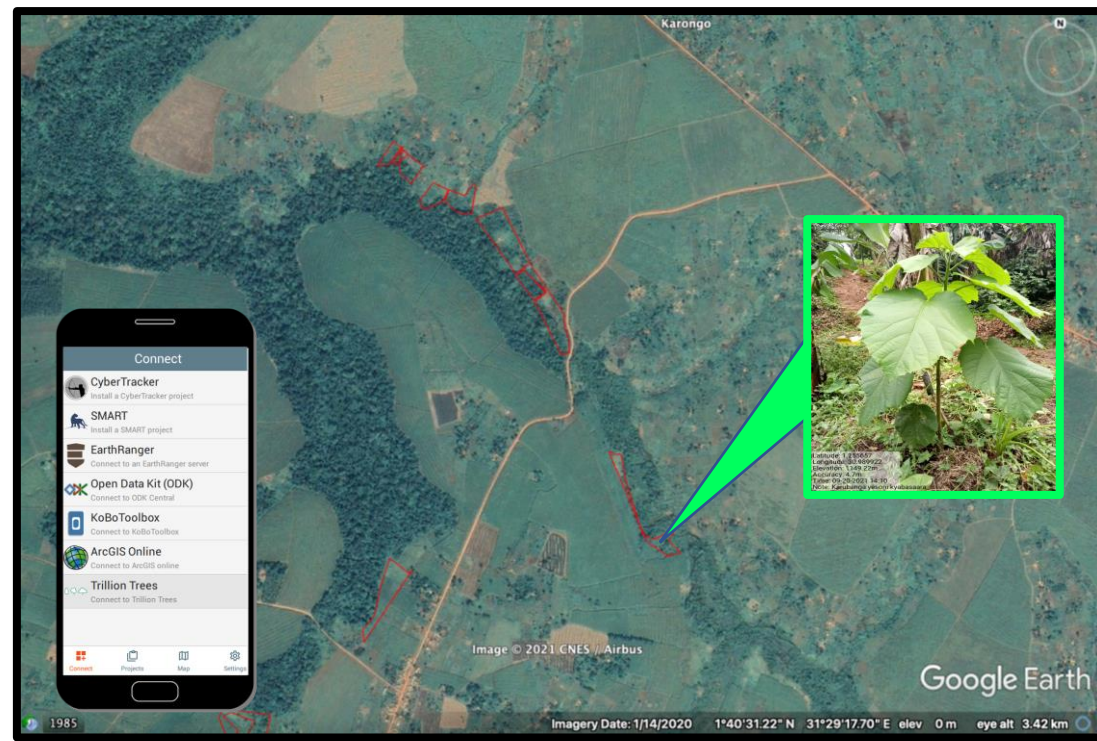


Trillion Trees Restoration projects

Other Trillion Trees Partner projects

Restoration monitoring

*App-based field data
collection*



FORMAPP

- Baseline data on land condition and community rights/ownership
- Maps of intervention areas
- Online dashboard of progress (end 2024)
- Integrating well-being monitoring metrics
- Potential for acoustic biodiversity monitoring
- Potential to be a facility for payments to communities for ecosystem services



ReForest Fund Reporting

- Every 6 months – portfolio progress
 - Hectares restored, trees growing, local beneficiaries
- Narrative around activities and impact
- People profiles from the landscapes
- Online dashboard (coming end 2024)

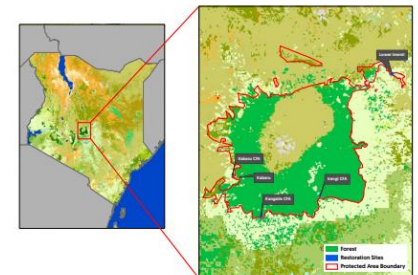
Projects

Working with local landowners to restore a threatened forest

Community building and forest restoration in
the Atlantic Forest, Brazil

The Atlantic Forest, covering 1.4 million square kilometres on the eastern coastlines of Brazil, Paraguay and Argentina is an incredible collection of eco-regions. It is home to thousands of species not found anywhere else - including around 8,000 plant species and 200 types of endemic birds.

One of the most threatened of all tropical forests, the area has been designated a [UN World Restoration Flagship landscape](#). WWF and BirdLife International partner, SAVE Brasil, are



Corporate opportunities

*Organisational and
customer values*

Defined referral partnership

- *Grow a tree for each new customer referral*

Commercial partnership

- *Grow a tree for each product purchased*

Customer loyalty reward programme

Employee giving scheme for conservation

Employee sustainable behaviour change scheme

- *Grow a tree for every X actions employees take*

Employee recognition scheme

- *Grow a tree for every employee*

Employee holiday charity choice donation

- *Let employees select a charity[ies] where your donation goes*

Our commitment to supporters

Effective, **science-led solutions** to increase forest cover on the planet

Regular 6-month and annual **impact reporting** to demonstrate results and ROI for people, nature and the climate

Commitment to building sustainability so that our success is lasting

Allocation of resources to **share success stories and content** for brand, customer and employee engagement

The **right trees**, in the **right places**, in the **right way**

Native species, locally sourced: Our projects promote natural regeneration where possible, and source seeds locally when planting is needed. We support community groups to establish nurseries to provide for future plantings.

Consultation and consent: We choose projects that have long commitments in landscapes, and have taken the time to develop effective partnerships with local community structures. Our funds help projects to develop and deepen these relationships.

Monitoring and verification: We map our restoration sites, so that the eligibility of the land can be independently verified, and the success of restoration efforts can be monitored in the future. We use a custom-built data storage system to track the progress of our projects.



Trillion Trees is a joint venture
between BirdLife International, Wildlife
Conservation Society and WWF to urgently
speed up and **scale up** the
protection and restoration of forests
to deliver the positive benefits of forests to
people, nature and **climate**





Your opportunity to help:
trilliontrees.org/reforest-fund



TRILLION
TREES



Join us to deliver **forest impact**

action@trilliontrees.org